



# Wicklewood Weekly

01953602333

OFFICE@WICKLEWOOD.NORFOK.SCH.UK

## Every Day Matters

This week's winners of the Every Day Matters trophy is Kestrel class with 99% attendance!

## Reading Stars

This week's winners of the Reading Stars trophy is Wren class!

## Daily Mile

This week's winners of the Daily Mile trophy is Lapwing class!

## Eco Champions

This week's winners of the Eco Elephant is Lapwing class!



This week, Wren class had a trip to the local church and Year 5 visited the Royal Observatory in Greenwich. All children had a wonderful time exploring new places and taking their learning out of the classroom. Kestrel Class enjoyed a grand view of London as well as the planetarium, observatory and Prime Meridian!

Trips and visits is key for children development and we are thankful for your support so that we can offer so many at Wicklewood.



Swift class had their Maths Café, where they focusing on problem solving. Lots of adults joined their children to work together and experience maths inside and outside the classroom.

Children showed their adults how to use concrete resources to help them reason and answer the questions.

## Student Councils

This week, Diversity Council held an assembly to share their plans to audit the books in the library to ensure there are representations of different cultures, disabilities, religions or families. Once the audit is complete they will report back their findings and create an action plan.





# Wicklewood Weekly

01953602333

OFFICE@WICKLEWOOD.NORFOLK.SCH.UK

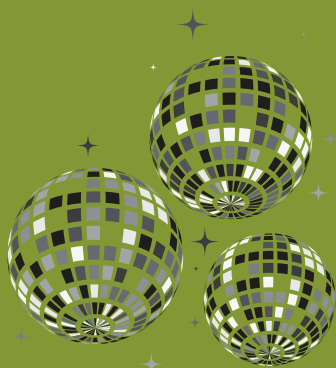
## Wicklewood Friends

We are so thankful for the Friends and everything they are doing for our school. So far this term they have organised a balloon walk, Spooktacular Halloween disco, many cake sales and Christmas cards.

At the end of the term, they are hosting the Wicklewood Christmas Fair and this is all to raise funds for our children's education.

If you have any spare time or a particular skill set that would support the friends, please contact the school office:

office@wicklewood.norfolk.sch.uk



To celebrate Remembrance we held a special assembly and our Year 6 class went to Wicklewood church to pay respects.

Charlie, from Swift class, was asked to lay a wreath at the Wymondham Remembrance Ceremony.

## Wicklewood's School Improvement Review

On Monday 6th November, Mike Capper and Alison Cartlidge came to our school to carry out a School Improvement Review. We are extremely proud of what our staff have achieved and wanted to share some of the wonderful things they saw happening at our school.

Firstly, they reported that children are happy and enjoy coming to school. The pupils are taught effectively and the learning is fun and engaging. They noted that there is a clear love of reading which starts in Nursery and is consistent through the school. They saw that the classrooms are book-rich environments and the revamped library is greatly enjoyed by pupils.

It was clear to them that the curriculum beyond the classroom is becoming an increasingly strong part of the school's provision and that we are making good use of trips and visits to support pupils' personal development and to give them a chance to shine.

Furthermore, they saw excellent relationships between staff and pupils, stating that staff are kind, caring and wonderful role models for our children.

This is just a snapshot of the fantastic progress Wicklewood has made since January 2023 and we will continue to work hard and strive to be the best we can for your children.

### Notices and Reminders

- Don't forget that school is closed this Tuesday (21st Nov) for a powercut INSET day!
- Please send your child with a healthy snack for break time (fruit or vegetables). If your child has a packed lunch please ensure there is a healthy snack option for them.
- The first two rows of the carpark are for staff or taxi drivers. Please do not park or block people in on these rows. Please try to park considerately so every space can be used. Please do not park in front of the school at all.
- Children must arrive to school on time. The gate closes at 8:55am and the register is taken at 9am. Morning routines are critical to daily learning and we want to ensure all children are in class and settled.
- Children must bring a spare change of shoes if they are doing Forest School.

Thank you!

## Dates for your diary:

- 21st November - INSET DAY
- 22nd November - Greenfinch Maths Cafe (2pm - 3pm)
- 12th December - Wren's Nativity
- 12th December - Twilight Christmas Carols at Wymondham Abbey (6:30pm - 7:30pm)
- 15th December - Wicklewood's Christmas Fair 3:30pm
- 3rd January - INSET Day
- 4th January - Spring Term begins
- 28th March - Children to attend school